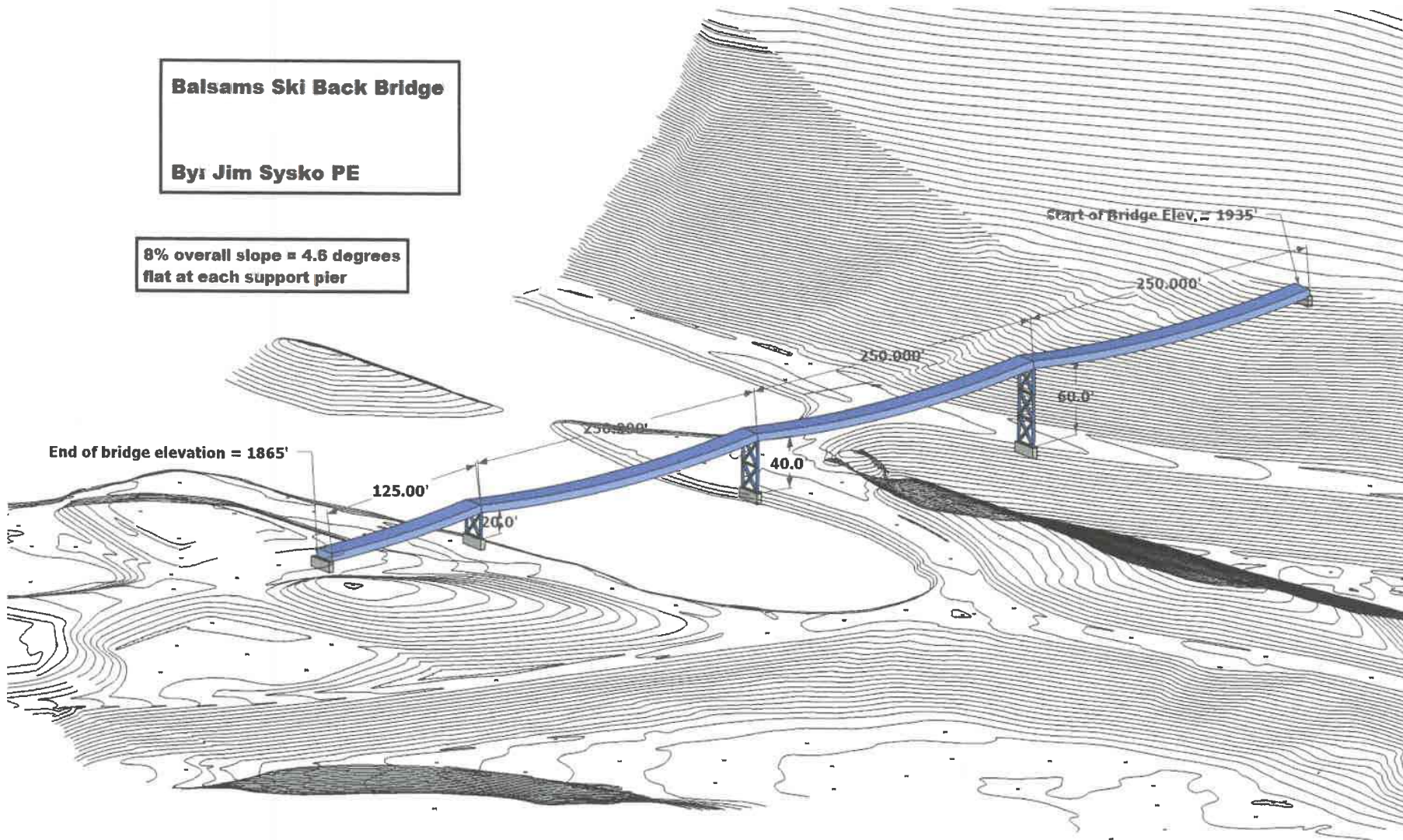
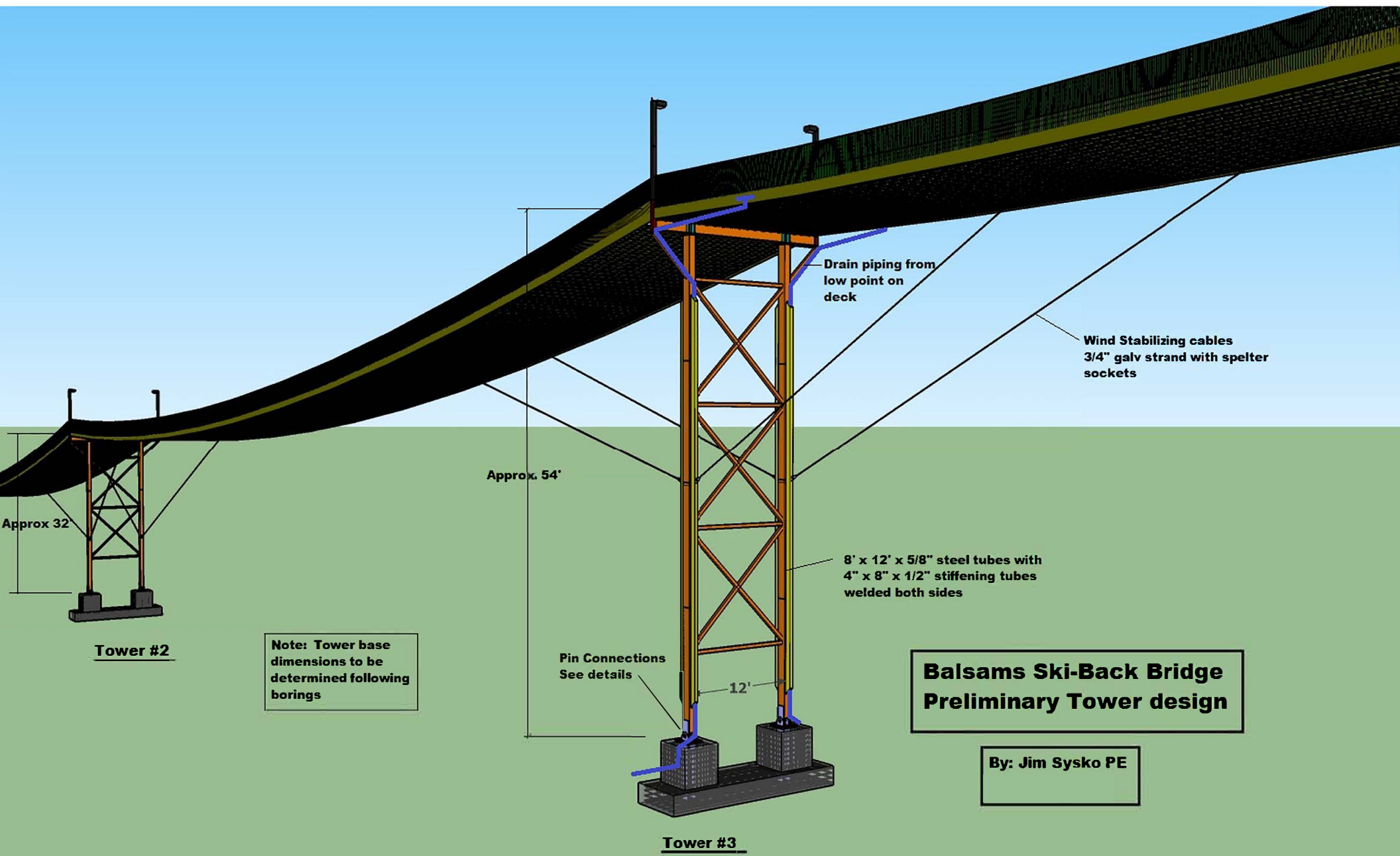


**Balsams Ski Back Bridge**  
**By: Jim Sysko PE**

**8% overall slope = 4.6 degrees  
flat at each support pier**





Approx 32

**Tower #2**

**Note: Tower base dimensions to be determined following borings**

Approx. 54'

Pin Connections  
See details

Drain piping from low point on deck

Wind Stabilizing cables  
3/4" galv strand with spelter sockets

8' x 12' x 5/8" steel tubes with  
4" x 8" x 1/2" stiffening tubes  
welded both sides

12'

**Tower #3**

**Balsams Ski-Back Bridge  
Preliminary Tower design**

By: Jim Sysko PE

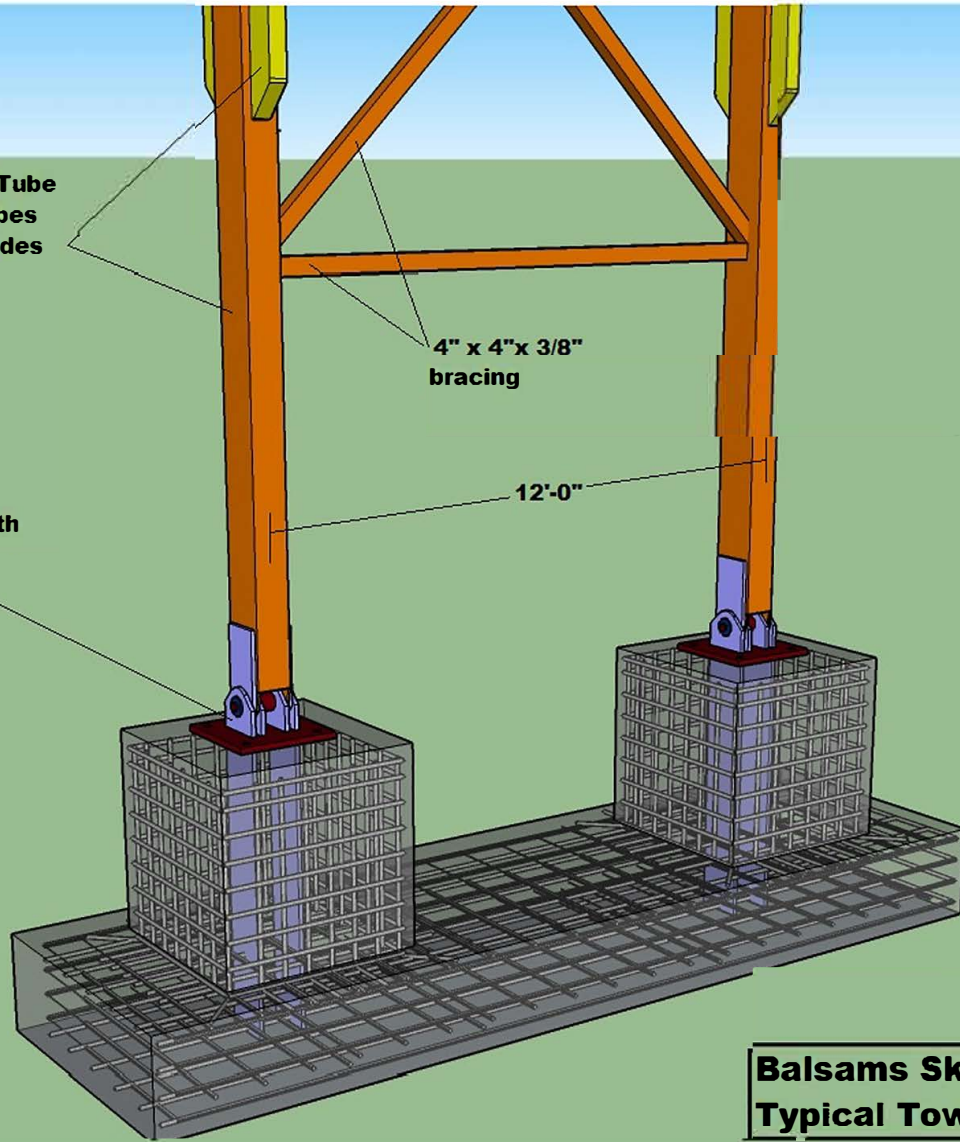
8" x 12" Steel Tube  
with 4" x 8" tubes  
welded both sides

4" x 4" x 3/8"  
bracing

12'-0"

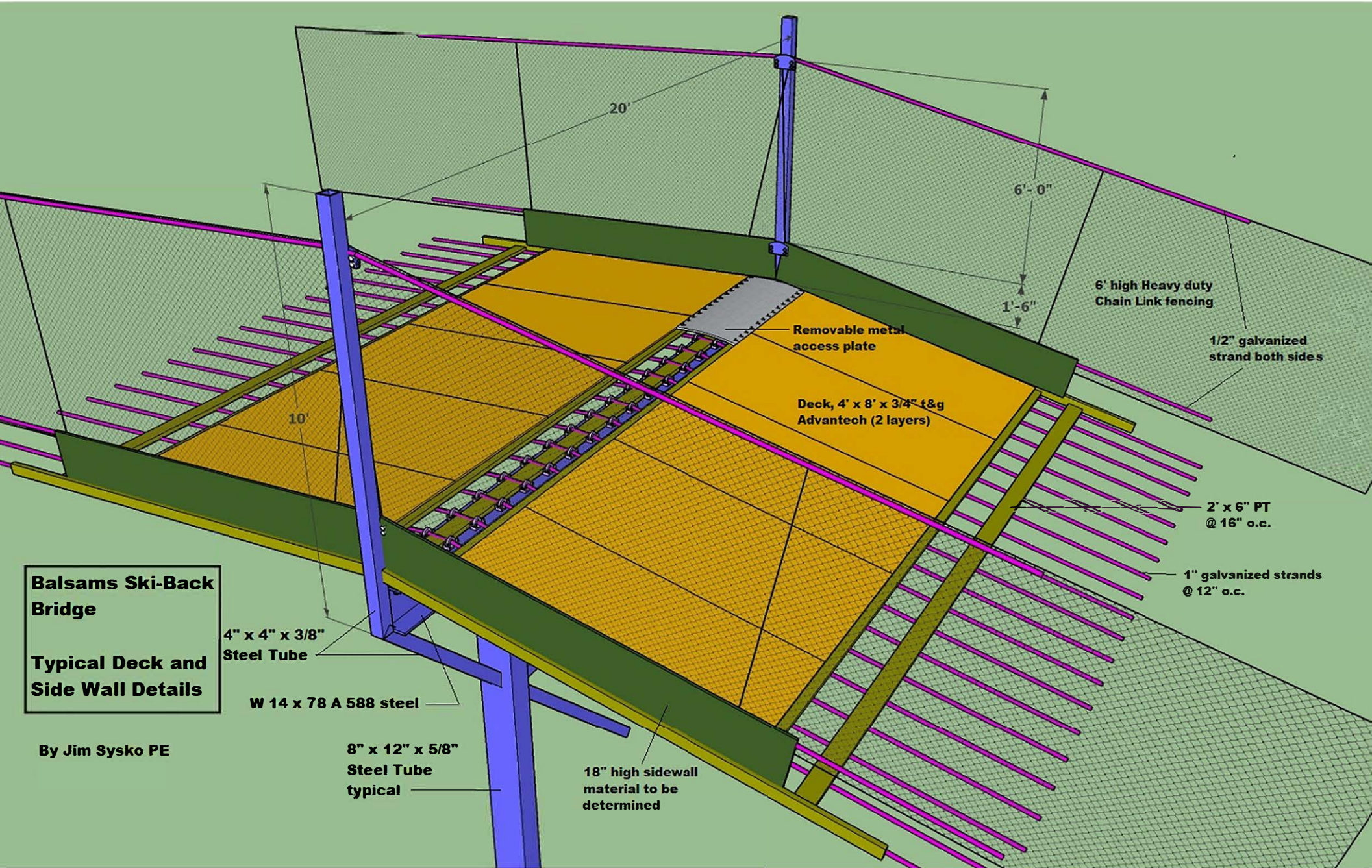
Pin Connections with  
base plate

Note: Final dimensions  
to be determined  
following field borings.



**Balsams Ski-Back Bridge  
Typical Tower Base**

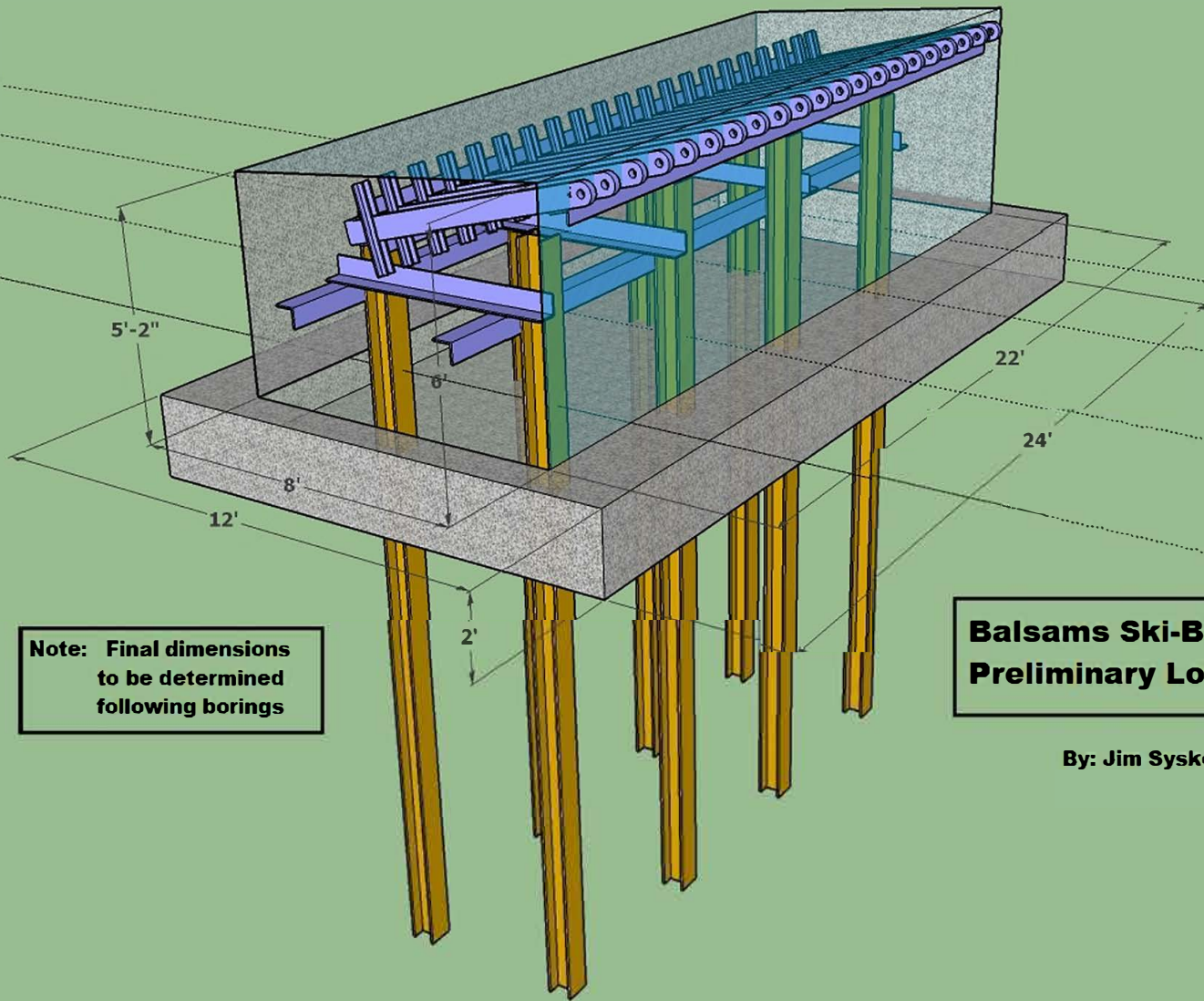
By: Jim Sysko PE



**Balsams Ski-Back Bridge**

**Typical Deck and Side Wall Details**

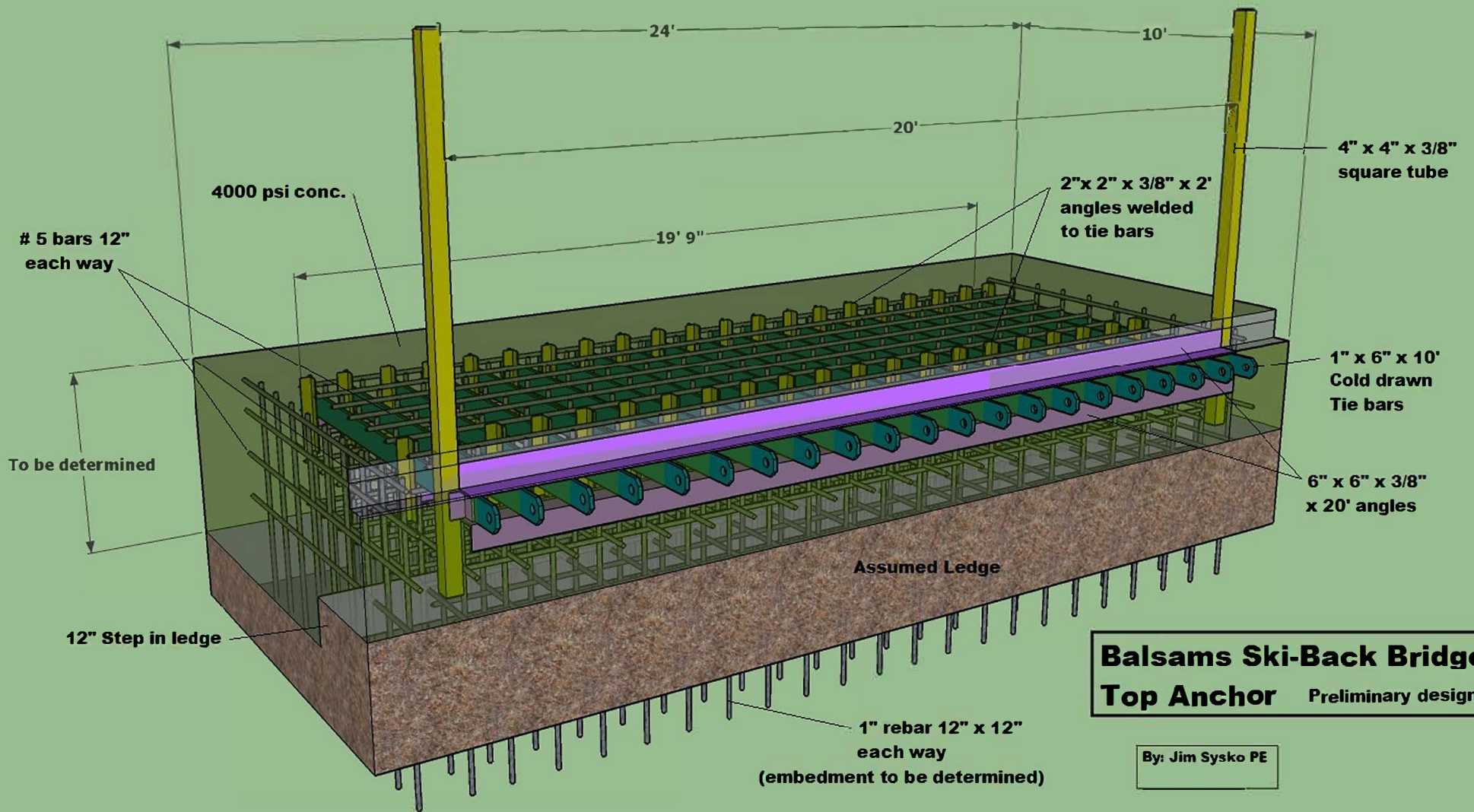
By Jim Sysko PE



**Note: Final dimensions to be determined following borings**

**Balsams Ski-Back Bridge  
Preliminary Lower Anchorage**

**By: Jim Sysko PE**



**Balsams Ski-Back Bridge  
Top Anchor** Preliminary design

By: Jim Sysko PE

