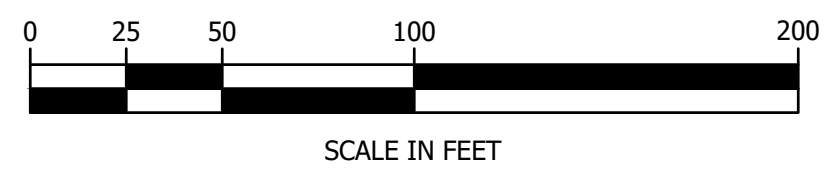




NOTE:
 1) THE PURPOSE OF THIS PLAN IS FOR REVIEW OF PRELIMINARY LAYOUT. FINAL DESIGN FOR BRIDGE AND GONDOLA TO BE ENGINEERED BY OTHERS.
 2) BRIDGE AND GONDOLA CLEARANCE DIMENSIONS OVER SPUR ROAD AND ROUTE 26 DO NOT INCLUDE BRIDGE SAG OR GONDOLA HAUL ROPE SAG.

PRELIMINARY
NOT FOR CONSTRUCTION



horizons
 Engineering
 Civil and Structural Engineering
 Land Surveying and Environmental Consulting
 MAINE • NEW HAMPSHIRE • VERMONT
 www.horizonsengineering.com

DIXVILLE CAPITAL, LLC
 THE BALSAMS
 DIXVILLE, COOS COUNTY, NEW HAMPSHIRE

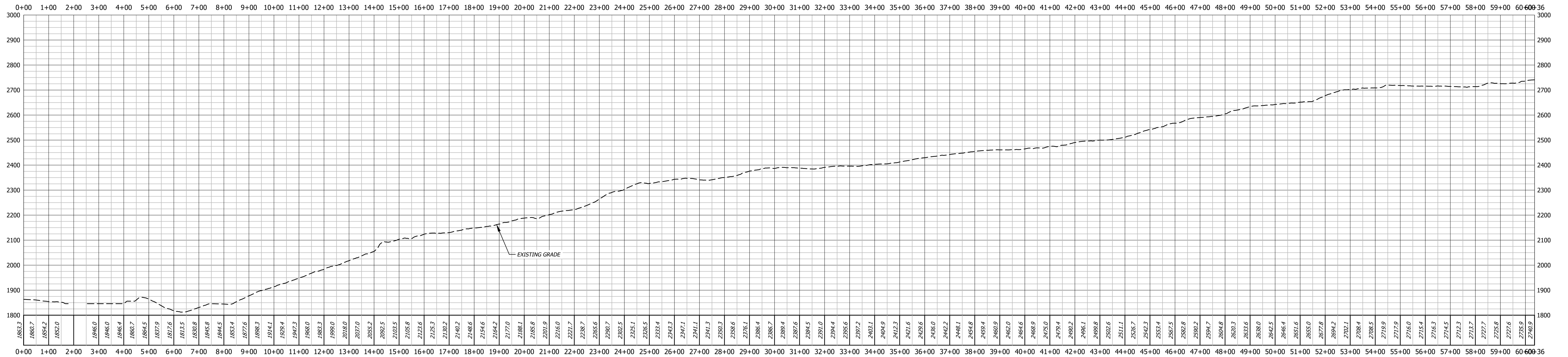
ROUTE 26 CROSSING PLAN

NO.	DATE	REVISION DESCRIPTION	ENG	DWG

DATE:	PROJECT #:
11/30/2022	220907
ENGIN'D BY:	DRAWN BY:
MSG	MSG
CHECK'D BY:	ARCHIVE #:
DEB	H-

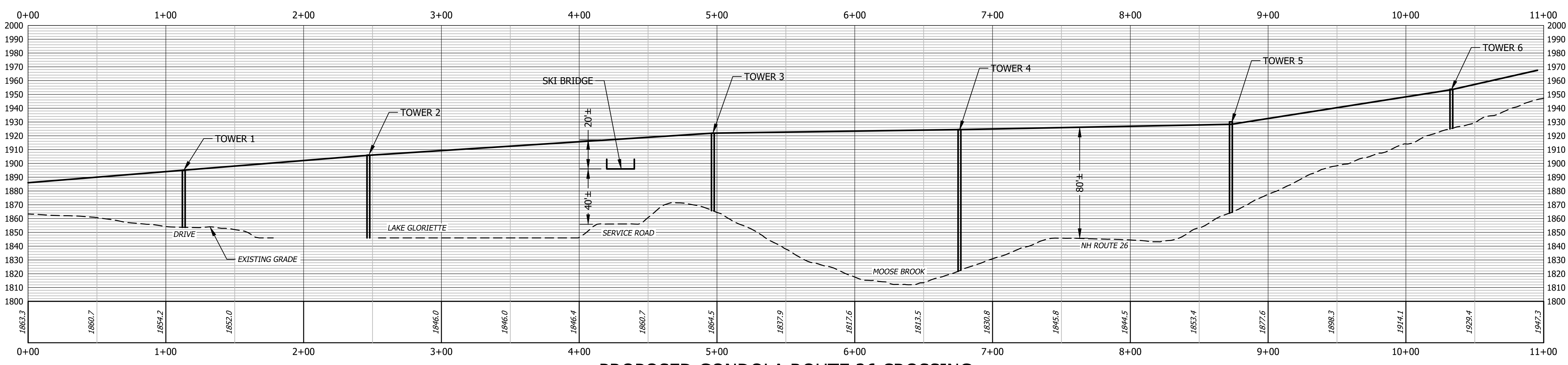
DATE OF PRINT
DECEMBER 12 2022
 HORIZONS ENGINEERING

© 2022
horizons
 Engineering
 All rights reserved



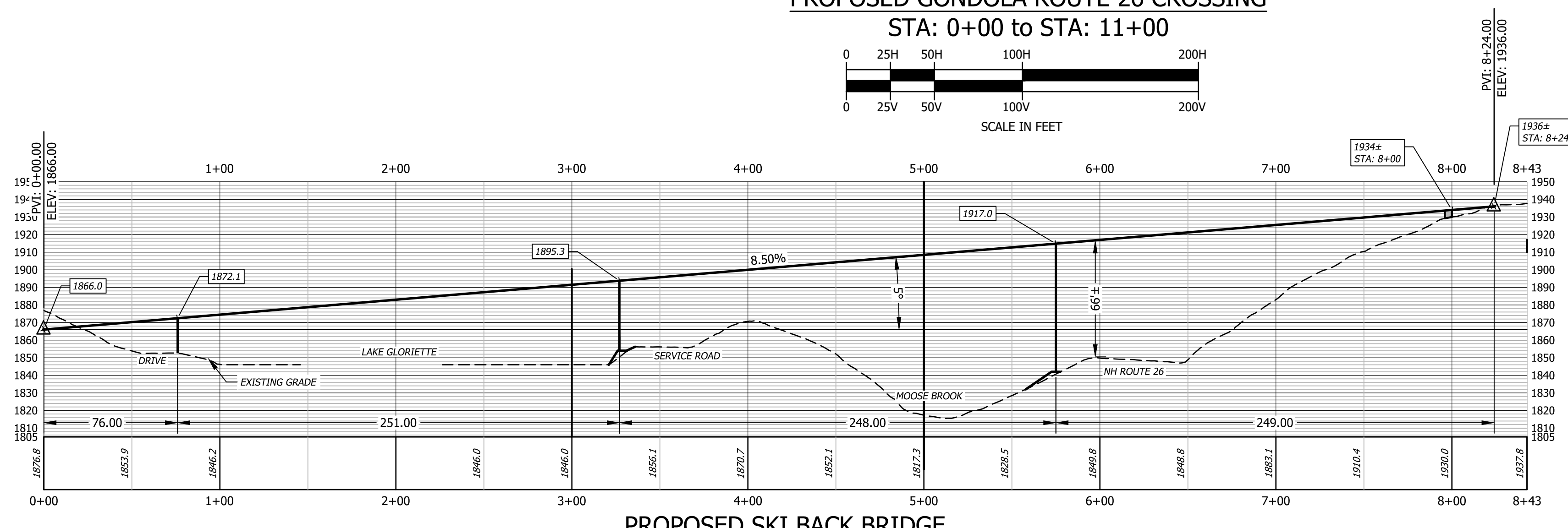
PROPOSED GONDOLA
 STA: 0+00 to STA: 60+36

SCALE IN FEET



PROPOSED GONDOLA ROUTE 26 CROSSING
 STA: 0+00 to STA: 11+00

SCALE IN FEET



PROPOSED SKI BACK BRIDGE
 STA: 0+00 to STA: 8+43

SCALE IN FEET

NOTE:
 1) THE PURPOSE OF THIS PLAN IS FOR REVIEW OF PRELIMINARY LAYOUT. FINAL DESIGN FOR BRIDGE AND GONDOLA TO BE ENGINEERED BY OTHERS.
 2) BRIDGE AND GONDOLA CLEARANCE DIMENSIONS OVER SPUR ROAD AND ROUTE 26 DO NOT INCLUDE BRIDGE SAG OR GONDOLA HAUL ROPE SAG.

**PRELIMINARY
 NOT FOR CONSTRUCTION**

horizons
 Engineering
 Civil and Structural Engineering
 Land Surveying and Environmental Consulting
 MAINE • NEW HAMPSHIRE • VERMONT
 www.horizonsengineering.com

DIXVILLE CAPITAL, LLC
 THE BALSAMS
 DIXVILLE, COOS COUNTY, NEW HAMPSHIRE

ROUTE 26 CROSSING PROFILE EXHIBIT

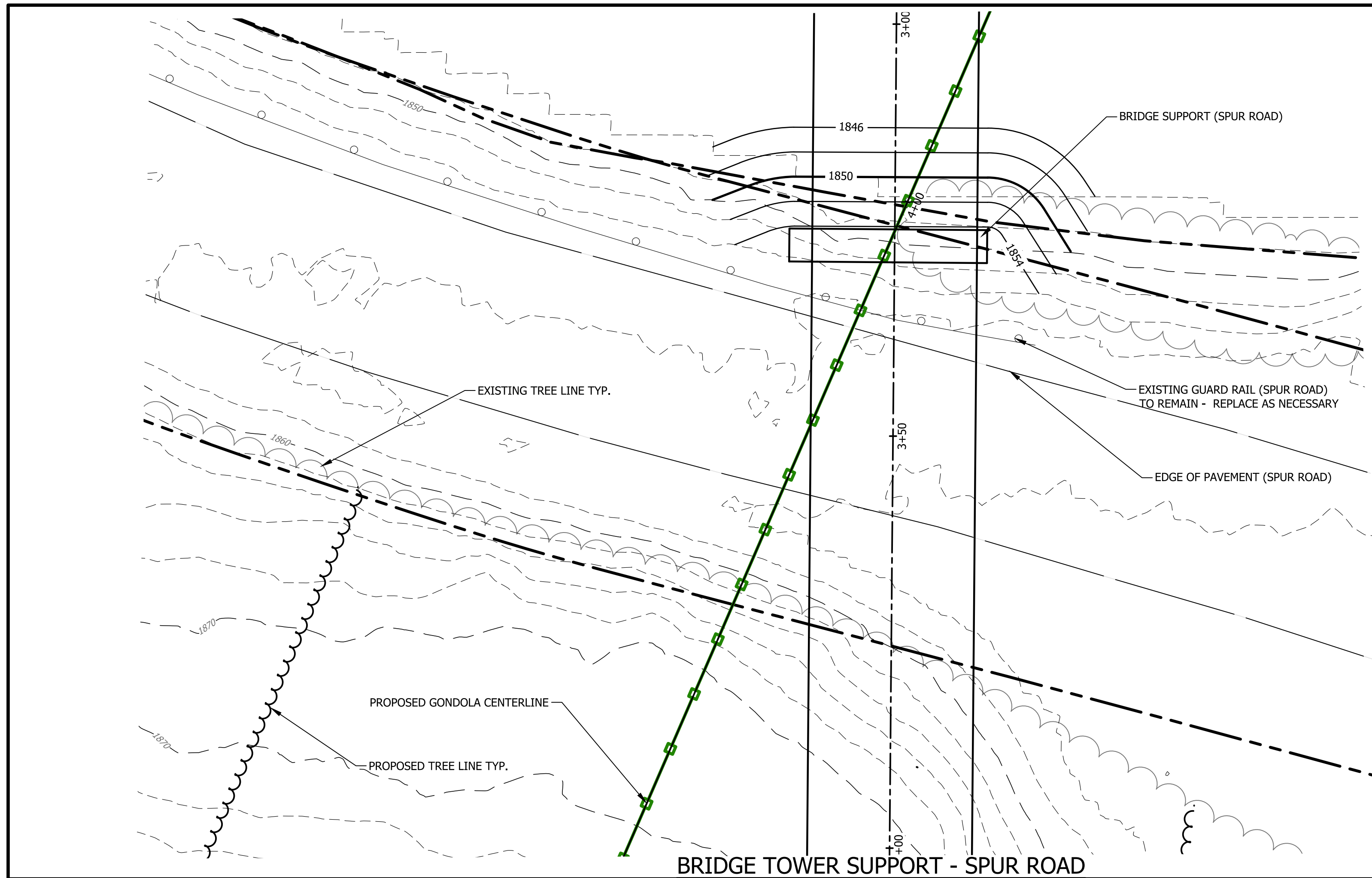
NO.	DATE	REVISION DESCRIPTION	ENG	DWG

DATE:	PROJECT #:
11/30/2022	220907
ENGINE'D BY:	DRAWN BY:
MSG	MSG
CHECK'D BY:	ARCHIVE #:
DEB	H-

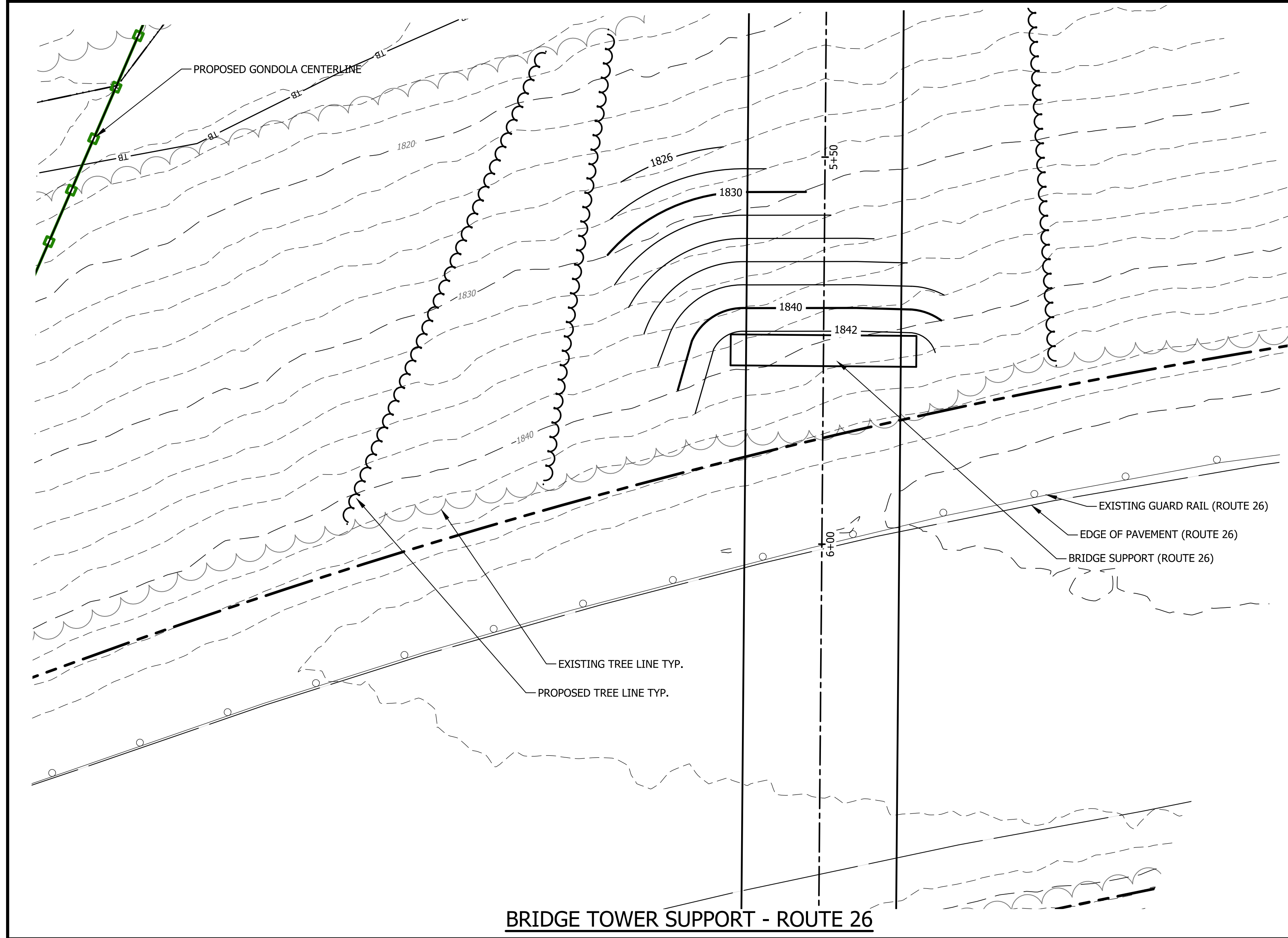
DATE OF PRINT
DECEMBER 12 2022
 HORIZONS ENGINEERING



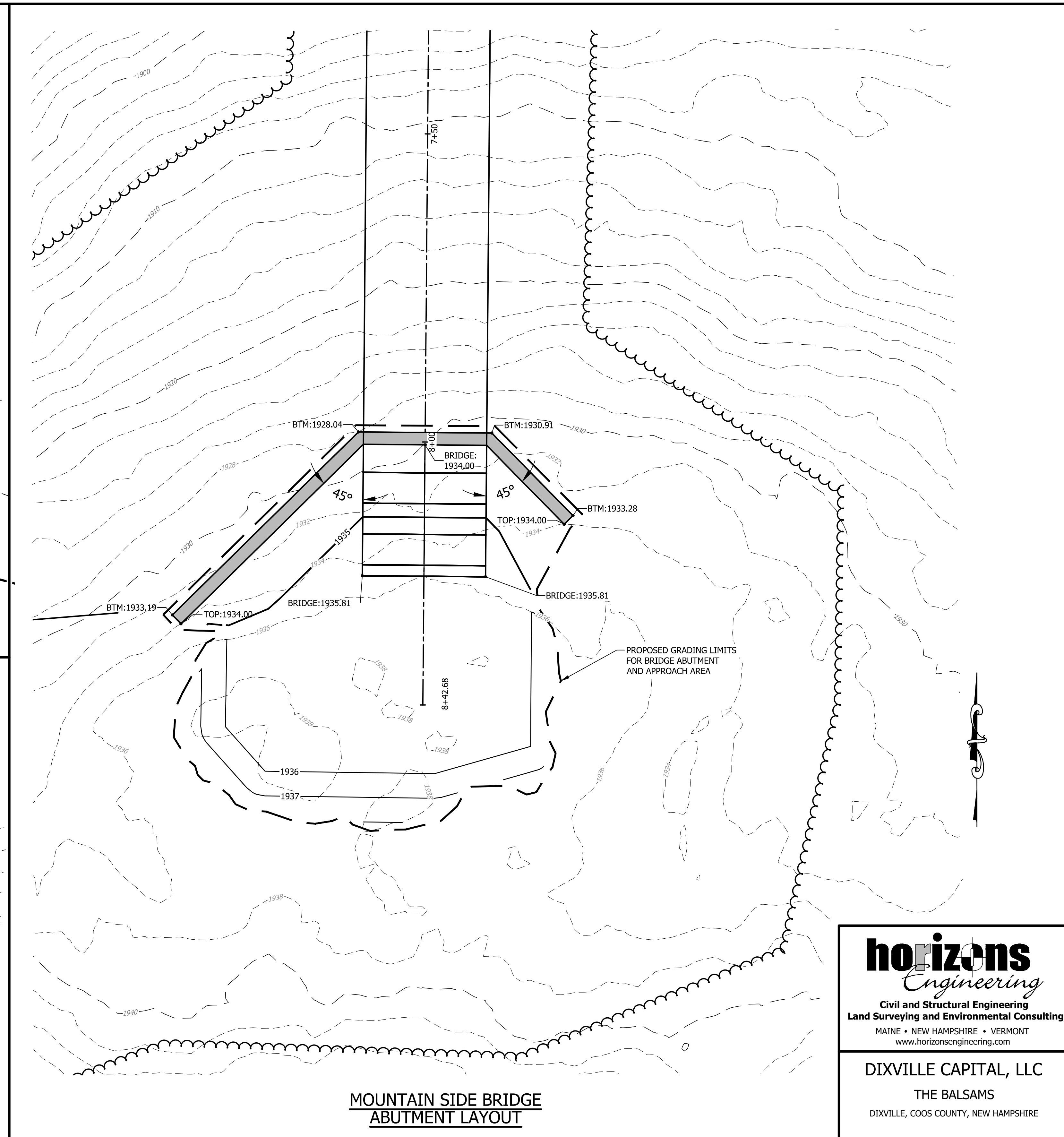
P:\2021\15 Bilsam Maine Services\Task 04 St. Side A\T Web\and\DWG\Final\202115 St. RT26 Crossing-30.dwg, 12/12/2022 1:21:50 PM, DonBourland



BRIDGE TOWER SUPPORT - SPUR ROAD



BRIDGE TOWER SUPPORT - ROUTE 26



MOUNTAIN SIDE BRIDGE
ABUTMENT LAYOUT

NOTE:
 1) THE PURPOSE OF THIS PLAN IS FOR REVIEW OF PRELIMINARY LAYOUT. FINAL DESIGN FOR BRIDGE AND GONDOLA TO BE ENGINEERED BY OTHERS.
 2) BRIDGE AND GONDOLA CLEARANCE DIMENSIONS OVER SPUR ROAD AND ROUTE 26 DO NOT INCLUDE BRIDGE SAG OR GONDOLA HAUL ROPE SAG.

**PRELIMINARY
NOT FOR CONSTRUCTION**



DATE OF PRINT
DECEMBER 12 2022
 HORIZONS ENGINEERING



horizons Engineering
 Civil and Structural Engineering
 Land Surveying and Environmental Consulting
 MAINE • NEW HAMPSHIRE • VERMONT
 www.horizonsengineering.com

DIXVILLE CAPITAL, LLC
 THE BALSAMS
 DIXVILLE, COOS COUNTY, NEW HAMPSHIRE

ROUTE 26 BRIDGE ABUTMENT PLAN

NO.	DATE	REVISION DESCRIPTION	ENG	DWG

DATE:	PROJECT #:
11/30/2022	220907
ENGIN'D BY:	DRAWN BY:
MSG	MSG
CHECK'D BY:	ARCHIVE #:
DEB	H-

P:\2021\15 Bilhamas Mainst Servicing\Task 04 Sh Side AOT\Wetland\DWG\Final\220115 SH RT26 Crossing.dwg, 12/12/2022 1:22:34 PM, D:\b\bound