

TRACT 14, EXCEPTION 2, WITNESS CORNER
WE FOUND:
• NO EVIDENCE OF CORNER OR WITNESS BLAZES FOUND
WE ADDED:
• NOTHING

TRACT 14, EXCEPTION 2, CORNER 1 & TRACT 462, EXCEPTION 1, CORNER 1
WE FOUND:
• A STANDARD USFS CLASS A CONCRETE MONUMENT WITH BRASS DISK WITH STONE PILE, 0.8" TALL, STAMPED "0953 1952, RLS 237 1981"
• A METAL FENCE POST W/ SURVEY MONUMENT SIGN
WE ADDED:
• A CARSONITE "SURVEY MARKER" POST
• 5" FIR BT BEARING S44°00'W, 6.9'
• 5" FIR BT BEARING S89°00'W, 15.5'

TRACT 14, EXCEPTION 2, CORNER 5
WE FOUND:
• A STANDARD USFS BOUND WITH RED STONE PILE, 0.8" TALL, STAMPED "CORNER 5, TRACT 14, EX 2, 1981 RLS 237"
• A METAL FENCE POST W/ SURVEY MONUMENT SIGN
WE ADDED:
• A CARSONITE "SURVEY MARKER" POST
• 10" SPRUCE BT BEARING N40°00'W, 36.0'

TRACT 14, EXCEPTION 2, CORNER 6
WE FOUND:
• A STANDARD USFS BOUND WITH RED STONE PILE, 0.8" TALL, STAMPED "CORNER 6, TRACT 14, EX 2, 1981 RLS 237"
• A METAL FENCE POST W/ SURVEY MONUMENT SIGN
WE ADDED:
• A CARSONITE "SURVEY MARKER" POST
• 10" SPRUCE BT BEARING S48°00'W, 26.0'

TRACT 14, EXCEPTION 2, CORNER 8A
WE FOUND:
• NOTHING, NEW CORNER
WE ADDED:
• A STANDARD USFS BOUND WITH STONE PILE, 0.6" TALL, STAMPED "14-EX2-8A 2019 LLS 979"
• AN ALUMINUM FENCE POST W/ SURVEY MONUMENT SIGN
• 10" SPRUCE BT BEARING S23°15'W, 20.8'
• 12" YELLOW BIRCH BT BEARING N81°52', 19.6'
• 12" YELLOW BIRCH BT BEARING N33°00', 27.8'

TRACT 14, EXCEPTION 2, CORNER 8B
WE FOUND:
• A STANDARD USFS BOUND WITH RED STONE PILE, 0.7" TALL, STAMPED "CORNER 8, TRACT 14, EX 2, 1981 RLS 237"
• A METAL FENCE POST W/ SURVEY MONUMENT SIGN
WE ADDED:
• A CARSONITE "SURVEY MARKER" POST
• 7" BIRCH BT BEARING S33°00'W, 8.2'

TRACT 14, EXCEPTION 2, CORNER 9
WE FOUND:
• A USFS LEDGE DISK FLUSH IN LEDGE, STAMPED "1969, 9, EXC2, 114, 1981 RLS 237"
• A METAL FENCE POST W/ SURVEY MONUMENT SIGN
WE ADDED:
• A CARSONITE "SURVEY MARKER" POST
• 7" BIRCH BT BEARING S33°00'W, 8.2'

TRACT 14, EXCEPTION 2, CORNER 9A
WE FOUND:
• NOTHING, NEW CORNER
WE ADDED:
• A BRASS DISK IN LEDGE ON NORTH BANK OF RIVER, STAMPED "10 FT W03A-14-EX2 2019 LLS 979"
• AN ALUMINUM FENCE POST W/ SURVEY MONUMENT SIGN
• NO SUITABLE BTs AVAILABLE

TRACT 14, EXCEPTION 2, CORNER 9B
WE FOUND:
• NOTHING, NEW CORNER
WE ADDED:
• A STANDARD USFS BOUND WITH STONE PILE, 0.4" TALL, STAMPED "14-EX2-9B 2019 LLS 979"
• AN ALUMINUM FENCE POST W/ SURVEY MONUMENT SIGN
• 10" SPRUCE BT BEARING S25°30'W, 9.4'

TRACT 462, EXCEPTION 1, CORNER 1A
WE FOUND:
• NOTHING, NEW CORNER
WE ADDED:
• A STANDARD USFS BOUND WITH STONE PILE, 0.6" TALL, STAMPED "462-EX1-1A 2019 LLS 979"
• AN ALUMINUM FENCE POST W/ SURVEY MONUMENT SIGN
• 12" SPRUCE BT BEARING S32°15'W, 18.7'
• 8" SPRUCE BT BEARING S1°30'W, 24.5'

TRACT 462, EXCEPTION 1, CORNER 1B
WE FOUND:
• NOTHING, NEW CORNER
WE ADDED:
• A STANDARD USFS BOUND WITH STONE PILE, 0.5" TALL, STAMPED "462-EX1-1B 2019 LLS 979"
• AN ALUMINUM FENCE POST W/ SURVEY MONUMENT SIGN
• 12" SPRUCE BT BEARING S32°15'W, 18.7'
• 8" SPRUCE BT BEARING S1°30'W, 24.5'

TRACT 462, EXCEPTION 1, CORNER 2A
WE FOUND:
• NOTHING, NEW CORNER
WE ADDED:
• A STANDARD USFS BOUND WITH STONE PILE, 0.5" TALL, STAMPED "14-EX2-2A 2019 LLS 979"
• AN ALUMINUM FENCE POST W/ SURVEY MONUMENT SIGN
• 12" SPRUCE BT BEARING S25°30'W, 9.4'

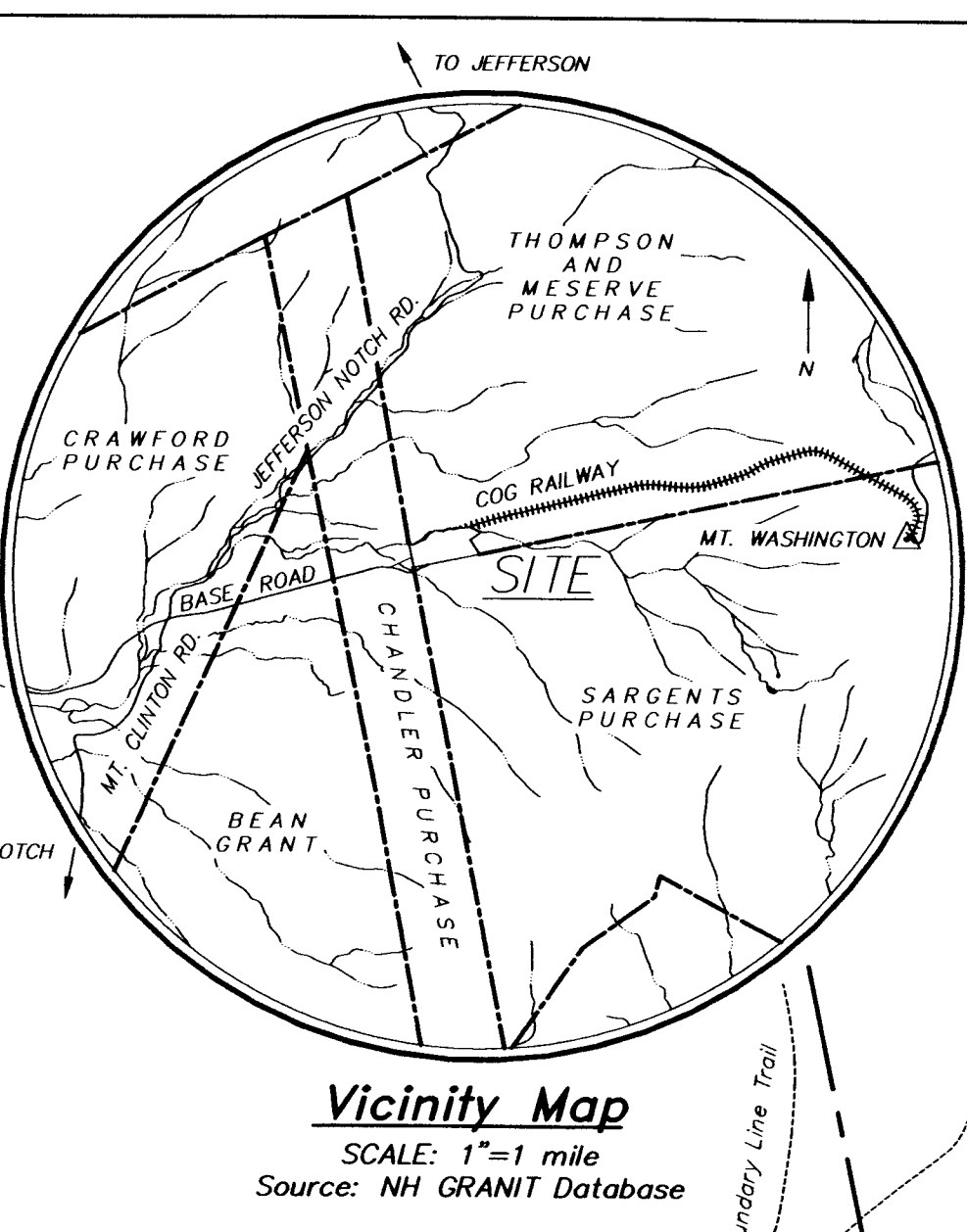
TRACT 462, EXCEPTION 1, CORNER 2B
WE FOUND:
• NOTHING, NEW CORNER
WE ADDED:
• A STANDARD USFS BOUND WITH STONE PILE, 0.5" TALL, STAMPED "14-EX2-2B 2019 LLS 979"
• AN ALUMINUM FENCE POST W/ SURVEY MONUMENT SIGN
• 12" SPRUCE BT BEARING S25°30'W, 9.4'

TRACT 462, EXCEPTION 1, CORNER 3A
WE FOUND:
• NOTHING, NEW CORNER
WE ADDED:
• A STANDARD USFS BOUND WITH STONE PILE, 0.5" TALL, STAMPED "462-EX1-3A 2019 LLS 979"
• AN ALUMINUM FENCE POST W/ SURVEY MONUMENT SIGN

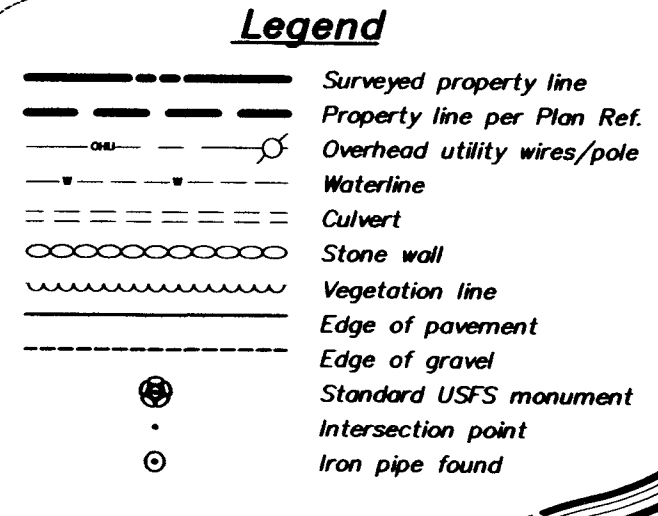
TRACT 462, EXCEPTION 1, CORNER 3B
WE FOUND:
• NOTHING, NEW CORNER
WE ADDED:
• A STANDARD USFS BOUND WITH STONE PILE, SET FLUSH, STAMPED "462-EX1-3B 2019 LLS 979"
• AN ALUMINUM FENCE POST W/ SURVEY MONUMENT SIGN

TRACT 462, EXCEPTION 1, CORNER 4A
WE FOUND:
• NOTHING, NEW CORNER
WE ADDED:
• A STANDARD USFS BOUND WITH STONE PILE, 0.7" TALL, STAMPED "462-EX1-4A 2019 LLS 979"
• AN ALUMINUM FENCE POST W/ SURVEY MONUMENT SIGN
• NW CORNER OF UTILITY SLAB BEARS N77°15', 48.0'
• SW CORNER OF UTILITY SLAB BEARS N85°45', 49.7'

TRACT 462, EXCEPTION 1, CORNER 4B
WE FOUND:
• NOTHING, NEW CORNER
WE ADDED:
• A STANDARD USFS BOUND WITH STONE PILE, 0.5" TALL, STAMPED "462-EX1-4B 2019 LLS 979"
• AN ALUMINUM FENCE POST W/ SURVEY MONUMENT SIGN
• 7" SPRUCE BT BEARING N18°00'W, 13.2'
• 7" SPRUCE BT BEARING S58°00'W, 14.8'



- Plan References:**
- 1914 plan "Mt. Washington Railway Company's Land at Base Station, Exception No. 2 of the Conway Co. Tract 14" by E.R. Merrill, Surveyor, from the files of the U.S. Forest Service.
 - Nov. 17, 1981 plan "U.S.D.A. Forest Service White Mountain National Forest Tract 14 Exception 2" by Hodges & Hayden, Registered Land Surveyors, from the files of the U.S. Forest Service.
- Notes:**
- Subject premises are Coos County Unincorporated Places Tax Map 1605, Lots 7 & 10; and contain a total of 1,528,956 sq. ft. = 35.10 ac.
 - Boundary evidence and site features near boundaries are per field surveys performed Sept.-Dec. 2015 and Oct.-Nov. 2019; using a Leica TCPR1203+ robotic total station and Leica GS15 GPS/GNSS receivers; under the direct supervision of Kevin L. Tilton, LLS #979; and conforming with the technical standards for urban property surveys per the New Hampshire Code of Administrative Rules of the Board of Licensure for Land Surveyors.
 - Bearings are grid. Coordinate grid is NHSPC - NAD83(CORS) per GPS observations. Divide grid distances by a combined factor of 0.9998528501 to get ground distances.
 - Site features within the Cog Railway property are taken from 2011 NHDOT color orthophotography.
 - Base Road is maintained by NHDOT up to the Cog Railway property. No layout was found in the District 1 records. A 4 rod (66') right-of-way is assumed.

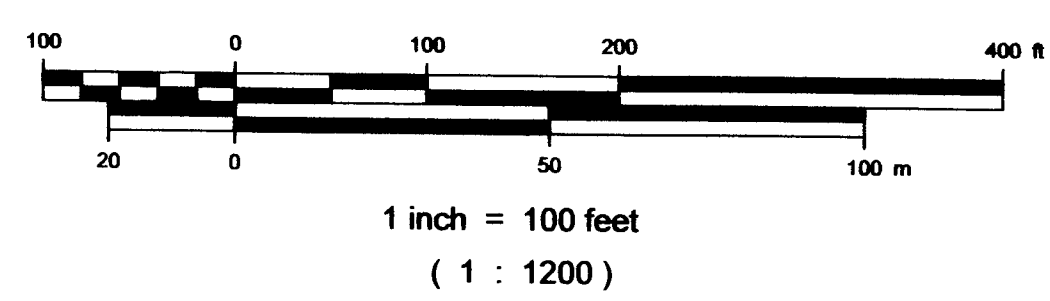
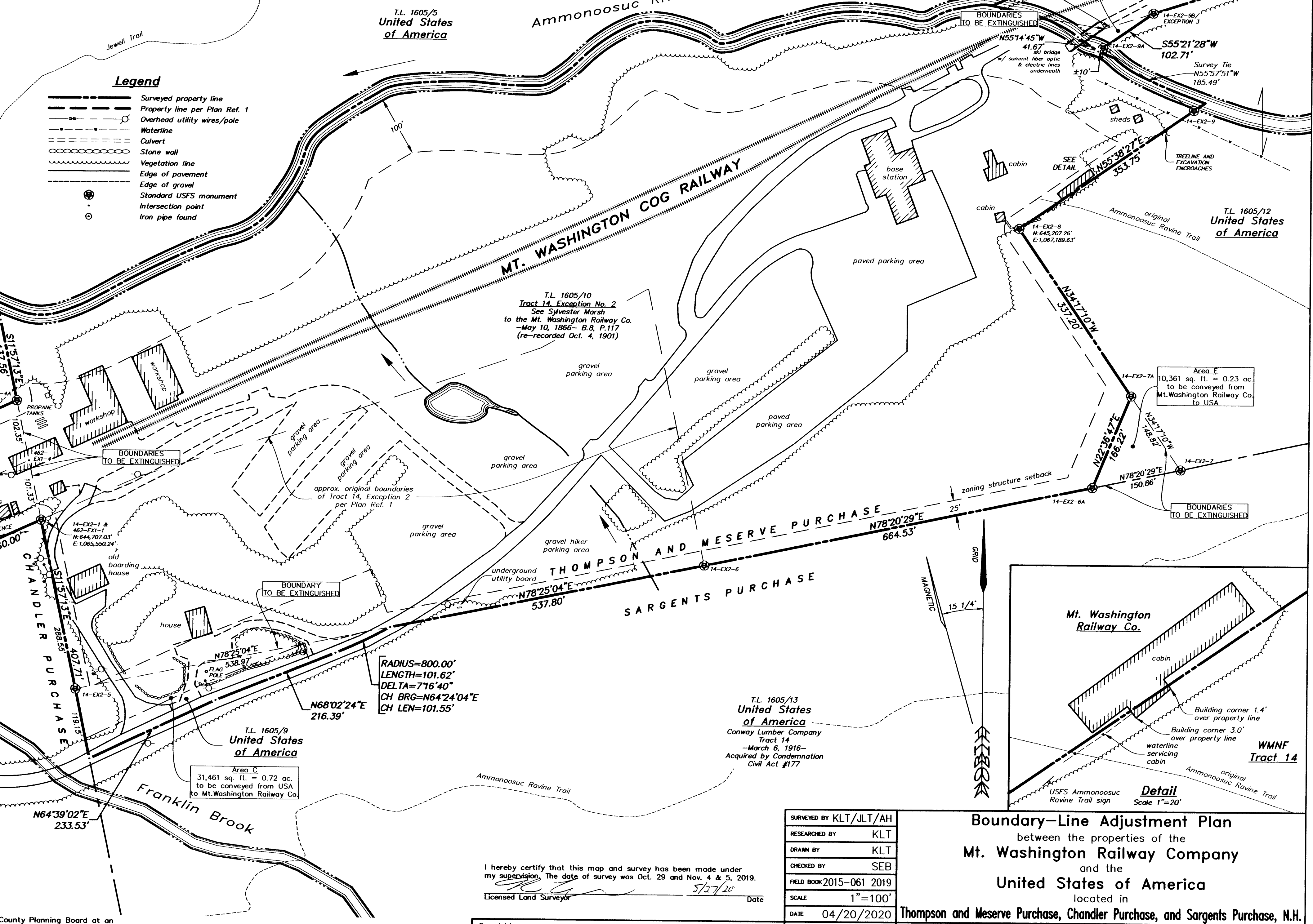


Area Change Table

Area Label	From T.L.	Area to MWRR Co.	Area to USA	To T.L.
A	1605/7		50,348 sq. ft. = 1.16 ac.	1605/6
B	1605/6	27,050 sq. ft. = 0.62 ac.		1605/7
C	1605/9	31,461 sq. ft. = 0.72 ac.		1605/10
D	1605/12	2,198 sq. ft. = 0.05 ac.		1605/10
E	1605/10		10,361 sq. ft. = 0.23 ac.	1605/12
Totals		60,709 sq. ft. = 1.39 ac.	60,709 sq. ft. = 1.39 ac.	

Lot Area Summary

T.L.	Owner	Area Before BLA	Area After BLA
1605/7	Mt. Washington Railway Co.	77,156 sq. ft. = 1.77 ac.	53,859 sq. ft. = 1.24 ac.
1605/10	Mt. Washington Railway Co.	±1,512,700 sq. ft. = ±34.73 ac.	±1,498,800 sq. ft. = ±34.41 ac.



I hereby certify that this map and survey has been made under my supervision. The date of survey was Oct. 29 and Nov. 4 & 5, 2019.
 Licensed Land Surveyor *Kevin L. Tilton* 5/27/20 Date

No.	Revision	DATE	BY

SURVEYED BY KLT/JLT/AH
 RESEARCHED BY KLT
 DRAWN BY KLT
 CHECKED BY SEB
 FIELD BOOK 2015-061 2019
 SCALE 1"=100'
 DATE 04/20/2020

Boundary-Line Adjustment Plan
 between the properties of the
Mt. Washington Railway Company
 and the
United States of America
 located in
Thompson and Meserve Purchase, Chandler Purchase, and Sargents Purchase, N.H.

HEB Engineers, Inc.
 Post Office Box 440
 2605 White Mountain Hwy.
 North Conway, NH 03860
 www.hebengineers.com
 Office (603) 356-6936
 Fax (603) 356-7715

2015-061
 V1.01
 SHEET 1 OF 1

This map is hereby approved by the Coos County Planning Board at an official meeting held on _____ and shall be filed on _____ with the Coos County Registry of Deeds.
 Chairman or Clerk, Coos County Planning Board _____ Date _____
 This survey was made as part of the White Mountain National Forest Management Program.
 Forest Supervisor _____ Date _____