

EVERSOURCE

Account Number: **5680 323 1018**

Statement Date: 09/13/18

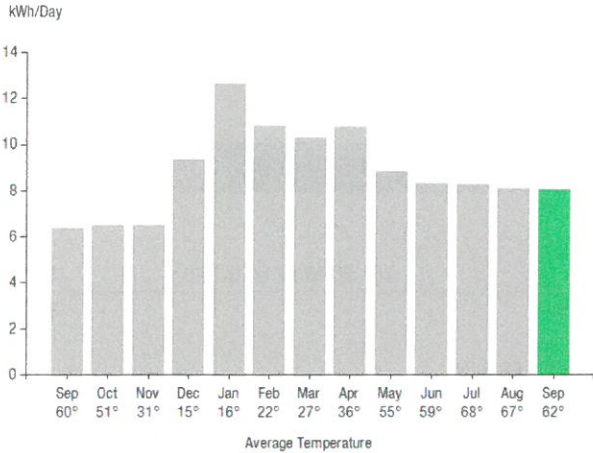
COOS COUNTY TRANSFER STATION
0 BACK POND RD
STEWARTSTOWN NH 03597

**Total Amount Due
by 10/08/18**

\$75.07

Amount Due On 09/08/18	\$78.94
Last Payment Received On 08/24/18	-\$78.94
Balance Forward	\$0.00
Total Current Charges	\$75.07

Electric Usage History - Kilowatt Hours (kWh)



Current Charges for Electricity

Supply

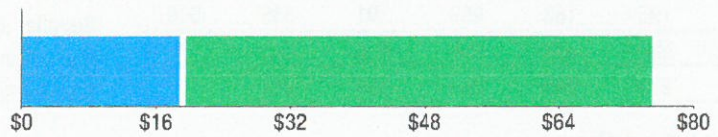
\$18.85

Cost of electricity from ENH POWER

Delivery

\$56.09

Cost to deliver electricity from Eversource



Your electric supplier is

ENH POWER
PO BOX 1150
AUBURN ME 04211-1150
WWW.ELECTRICITYNH.COM
866-266-2641

Electric Usage Summary

This month your average daily electric use was **8.0 kWh**

This month you used **33.3% more** than at the same time last year



APPROVED FOR PAYMENT

Account # 08-09200-6100

Signed [Signature] Date 9/20/18

News For You

Eversource prepares year-round to make sure we're there when you need us when stormy weather comes our way. You can prepare, too. Visit the 'Outages & Storms' section at Eversource.com. Sign up to receive power outage and restoration updates through your choice of text, email and phone.

Remit Payment To: Eversource, PO Box 56003, Boston, MA 02205-6003

NH_180913PROD.TXT-26931-000000506

EVERSOURCE

Account Number: **5680 323 1018**

You may be subject to a 1.00% late payment charge if the "Total Amount Due" is not received by 10/08/18

**Total Amount Due
by 10/08/18**

\$75.07

Amount Enclosed

013466 000000506



COOS COUNTY TRANSFER STATION
C/O CRAIG HAMELIN
PO BOX 10
W STEWARTSTWN NH 03597-0010



Eversource
PO Box 56003
Boston, MA 02205-6003

5680323101837 0000075079 0000075079

EVERSOURCE

Account Number: **5680 323 1018**

Customer name key: COOS

COOS COUNTY TRANSFER STATION

0 BACK POND RD

STEWARTSTOWN NH 03597

Service reference: 887990006 Billing Cycle: 09

Service from 08/14/18 - 09/13/18 30 Days

Next read date on or about: Oct 12, 2018

Meter Number	Current Read	Previous Read	Current Usage	Reading Type
S72927074	9622	9381	241	Actual

Total Demand Use = 3.10 kW

Monthly kWh Use

Sep	Oct	Nov	Dec	Jan	Feb	Mar
190	195	182	299	391	335	309
Apr	May	Jun	Jul	Aug	Sep	
323	273	249	248	259	241	

Contact Information

Emergency: 800-662-7764

www.eversource.com

BusinessCenterNH@eversource.com

Pay by Phone: 888-729-7764

Customer Service: 866-554-6025

For information or questions regarding your account, please contact Eversource at the number above. If, after contacting us, your billing dispute is still unresolved, you may call the New Hampshire Public Utilities Commission at 800-852-3793.

**Total Amount Due
by 10/08/18**

\$75.07

Electric Account Summary

Amount Due On 09/08/18	\$78.94
Last Payment Received On 08/24/18	-\$78.94
Balance Forward	\$0.00
Current Charges/Credits	
Electric Supply Services	\$18.85
Delivery Services	\$56.09
Other Charges or Credits	\$0.13
Total Current Charges	\$75.07
Total Amount Due	\$75.07

Total Charges for Electricity

Supplier (ENH POWER)

Generation Srvc Chrg***	241.00kWh X \$0.07820	\$18.85
Subtotal Supplier Services		\$18.85

Delivery (RATE G GENERAL SERVICE)

Customer Chrg 3-Phase		\$29.76
Distribution Chrg	241.00kWh X \$0.06986	\$16.84
Transmission Chrg	241.00kWh X \$0.01900	\$4.58
Strnded Cst Recovery Chrg	241.00kWh X \$0.01581	\$3.81
System Benefits Chrg	241.00kWh X \$0.00455	\$1.10
Subtotal Delivery Services		\$56.09

Total Cost of Electricity \$74.94

Other Charges or Credits

Electricity Consumption Tax (calculated by rate \$0.00055/kWh)		\$0.13
Subtotal Other Charges or Credits		\$0.13

Total Current Charges \$75.07

NH_180913PROD.TXT-26932-000000506

IDENTITY PROTECTION

On November 1, 2008, Eversource implemented additional identity protection measures to safeguard our customers' confidential account information. These measures will help us to protect your confidential personal information and ensure only authorized access to your account. For current customers requesting account information or access, Customer Service Representatives will ask several simple questions to verify the caller's identity and their right to access the requested account information. We are committed to providing the excellent customer service you deserve and the timely information you need to manage your energy use.

EVERSOURCE

Account Number: **5680 323 1018**

Customer name key: COOS

COOS COUNTY TRANSFER STATION
0 BACK POND RD
STEWARTSTOWN NH 03597

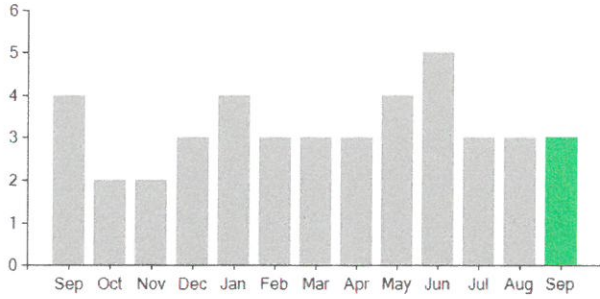
Total Amount Due
by 10/08/18

\$75.07

Continued from previous page...

Demand Profile

Max. kW Demand



Important Messages About Your Account

The stranded cost recovery charge is composed of a rate reduction bond charge owned by PSNH Funding LLC 3 as filed with the NHPUC and a stranded cost recovery amount approved by the NHPUC.



